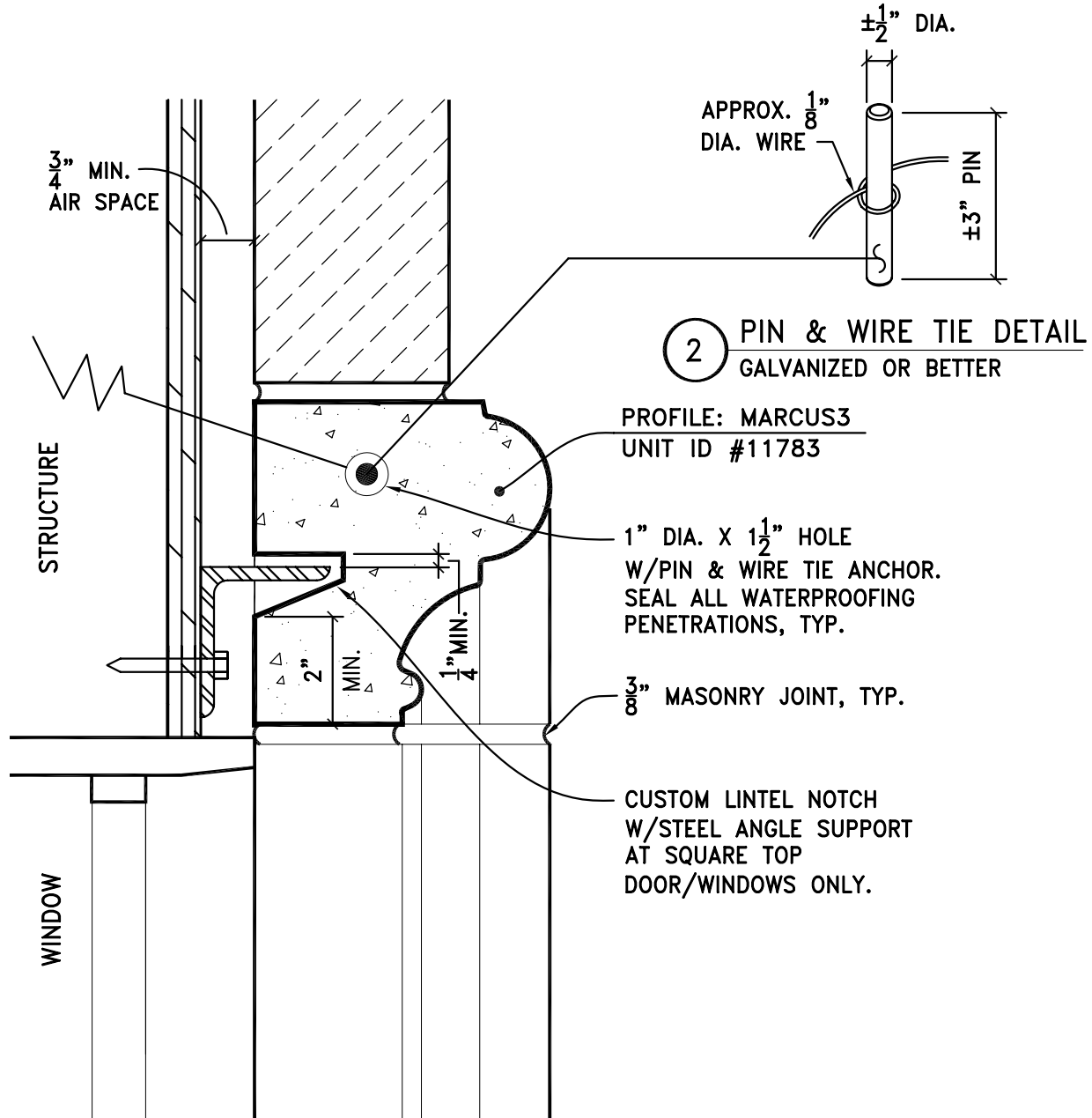


THESE DRAWINGS ARE SUGGESTED
 INSTALLATION DETAILS ONLY;
 ALL ATTACHMENTS, STEEL SIZES,
 GAUGE THICKNESS, AND ANCHOR
 SIZES SHOULD BE CALCULATED
 BY A STRUCTURAL ENGINEER;
 WE ARE NOT LIABLE FOR
 INSTALLATION OF ANY KIND



2 PIN & WIRE TIE DETAIL
 GALVANIZED OR BETTER

PROFILE: MARCUS3
 UNIT ID #11783

1" DIA. X 1 1/2" HOLE
 W/PIN & WIRE TIE ANCHOR.
 SEAL ALL WATERPROOFING
 PENETRATIONS, TYP.

3/8" MASONRY JOINT, TYP.

CUSTOM LINTEL NOTCH
 W/STEEL ANGLE SUPPORT
 AT SQUARE TOP
 DOOR/WINDOWS ONLY.

1 CAST STONE HEADER ATTACHMENT AT MASONRY VENEER
 WITH HIDDEN SUPPORT LINTEL AND PIN & WIRE TIE ANCHOR

TYPICAL USES:
 DOOR & WINDOW HEADER

STD 3/8" MORTAR JOINT

SCALE: N.T.S.

STONE LEGENDS

301 Pleasant Drive - Dallas, TX 75217
 Voice (214) 398-0999 - Fax (214) 398-1293
 Visit our website at www.stonelegends.com

CLIENT:
 PROJECT: