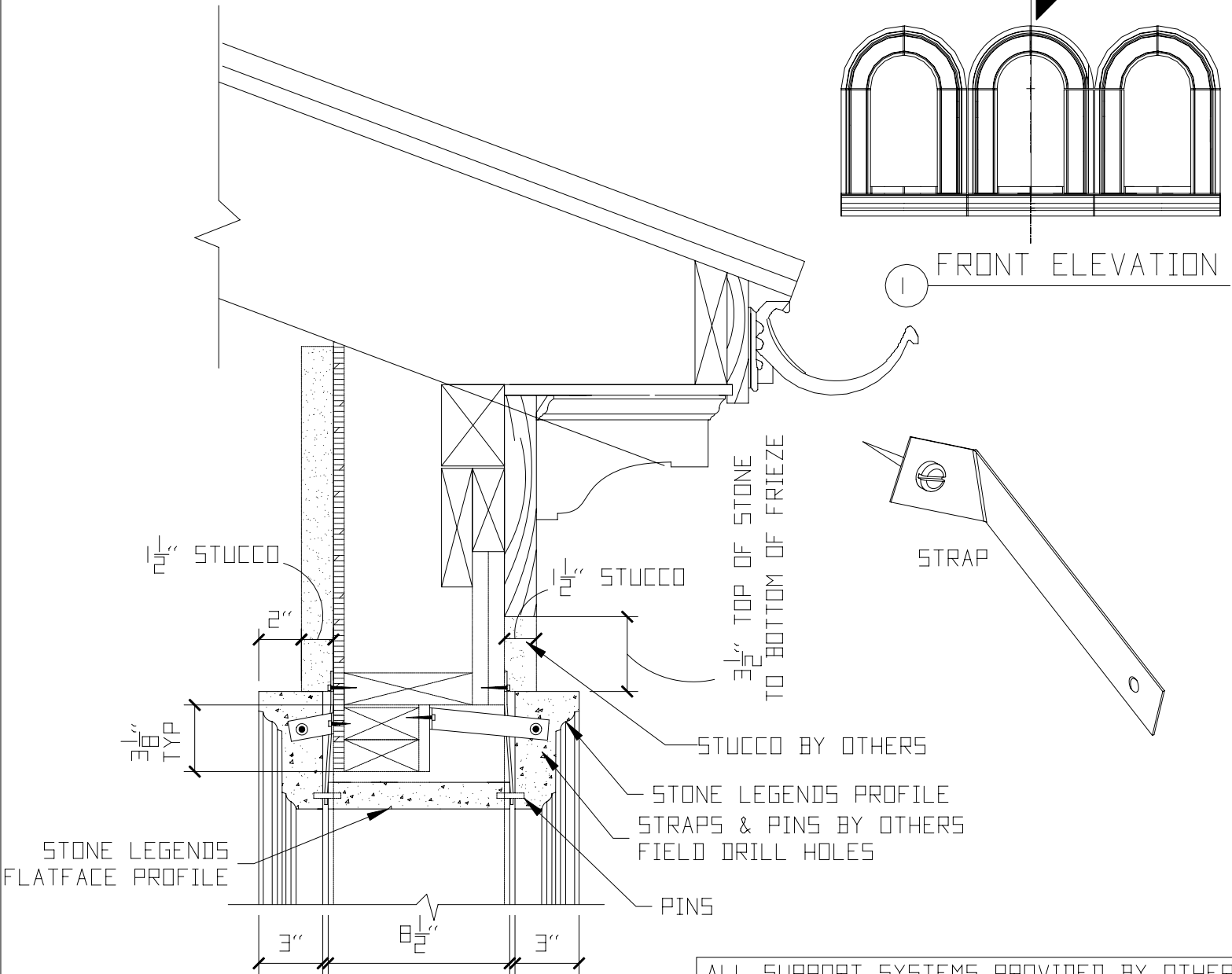
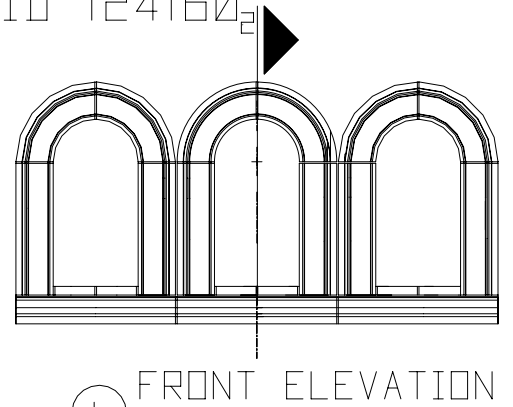


Typical Framing Example on Double Sided Arches
 Stone Legends Filestore ID 124160₂



2 CROSS SECTION @ SURROUND

ALL SUPPORT SYSTEMS PROVIDED BY OTHERS
 CLIP ANCHORS REQUIRED AT EVERY JOINT
 AND END; TWO-WAY ANCHORS PROVIDED BY
 OTHERS; MASON TO FIELD DRILL AND SLOT AS
 NECESSARY.

STD 3/8" MORTAR JOINT

SCALE: N.T.S.